

# NRHA



## 2017

# NRHA European Summit

## Brussels, Belgium

### January 16 & 17

3021 West Reno Avenue | Oklahoma City, Oklahoma 73107 | (405) 946-7400 | [nrha.com](http://nrha.com) | f:(405) 946-8425

# NRHA European Membership

<b>2011</b>	<b>3606</b>
<b>2012</b>	<b>3665</b>
<b>2013</b>	<b>3587</b>
<b>2014</b>	<b>3757</b>
<b>2015</b>	<b>3927</b>
<b>2016</b>	<b>3852</b>

	<b>2011</b>	<b>2012</b>	<b>2013</b>	<b>2014</b>	<b>2015</b>	<b>2016</b>
<b>Austria</b>	323	365	346	336	360	351
<b>Belgium</b>	177	191	184	202	214	218
<b>Croatia</b>						1
<b>Czech Republic</b>	88	84	70	56	48	39
<b>Denmark</b>	84	84	72	81	74	66
<b>Finland</b>	37	34	24	28	27	27
<b>France</b>	241	282	327	345	335	329
<b>Germany</b>	811	787	774	756	807	717
<b>Hungary</b>	21	25	17	15	13	22
<b>Ireland</b>	14	9	2	2	3	2
<b>Israel</b>	103	96	108	134	147	160
<b>Italy</b>	691	685	678	760	752	776
<b>Liechtenstein</b>			2	2	2	2
<b>Luxembourg</b>	14	19	22	27	29	34
<b>Monaco</b>			1			
<b>Netherlands</b>	308	299	272	266	308	295
<b>New Caledonia</b>				1	2	1
<b>New Zealand</b>	1	2	2	3	4	6
<b>Norway</b>	33	41	41	44	60	58
<b>Poland</b>	57	53	66	69	70	77
<b>Russia</b>					2	2
<b>Slovakia</b>	18	20	17	9	12	12
<b>Slovenia</b>	5	4	6	12	28	12
<b>Spain</b>	13	9	14	19	35	46
<b>Sweden</b>	165	168	146	187	202	202
<b>Switzerland</b>	277	93	288	309	292	292
<b>United Kingdom</b>	122	115	108	95	101	105

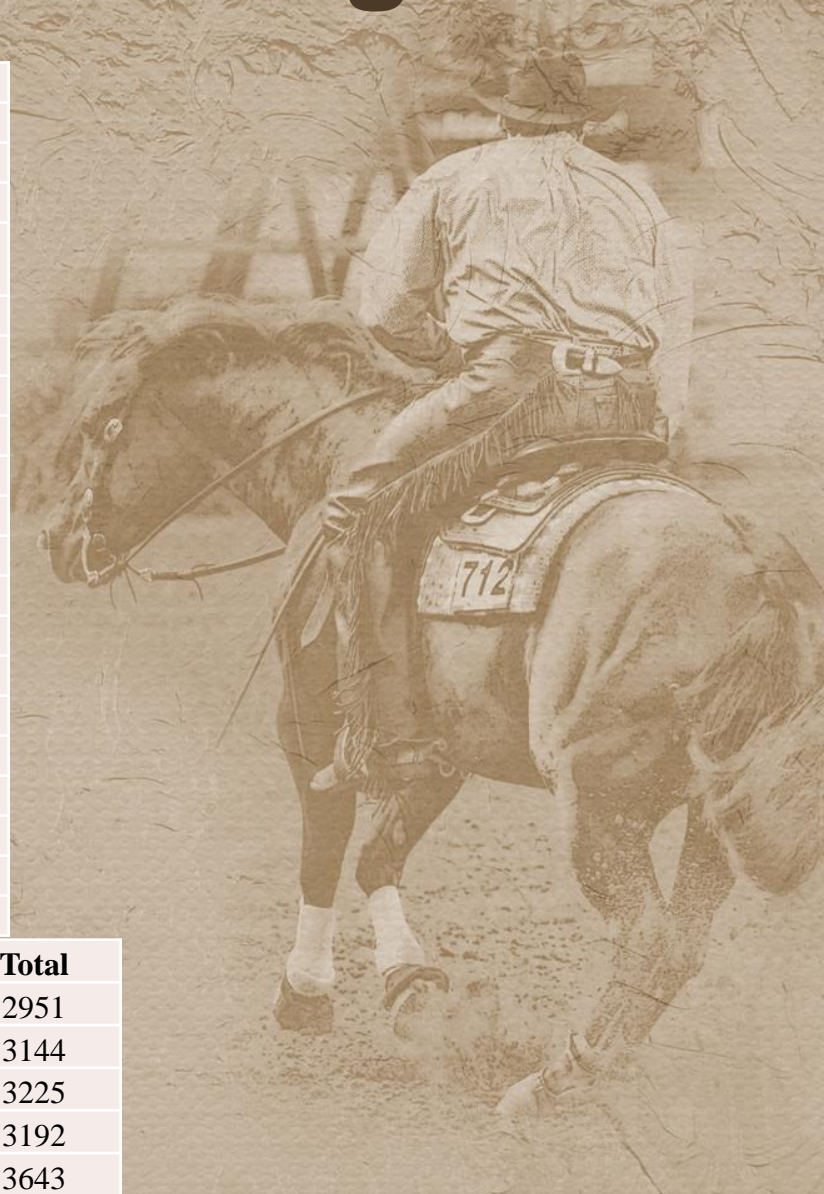
# NRHA European Competition Licenses

<b>2011</b>	537
<b>2012</b>	692
<b>2013</b>	774
<b>2014</b>	1078
<b>2015</b>	1422
<b>2016</b>	1601

<b>Afghanistan</b>	1	<b>Israel</b>	183
<b>Argentina</b>	36	<b>Italy</b>	2238
<b>Austria</b>	411	<b>Luxembourg</b>	19
<b>Belgium</b>	455	<b>Netherlands</b>	325
<b>Bouvet Island</b>	1	<b>New Zealand</b>	4
<b>Cayman Islands</b>	2	<b>Norway</b>	22
<b>Chile</b>	2	<b>Poland</b>	85
<b>Colombia</b>	2	<b>Portugal</b>	1
<b>Czech Republic</b>	58	<b>Slovakia</b>	21
<b>Denmark</b>	60	<b>Slovenia</b>	13
<b>Finland</b>	9	<b>Spain</b>	10
<b>France</b>	436	<b>Sweden</b>	129
<b>Germany</b>	1389	<b>Switzerland</b>	104
<b>Greece</b>	2	<b>Ukraine</b>	1
<b>Hungary</b>	18	<b>United Kingdom</b>	55
<b>India</b>	1	<b>Uruguay</b>	11

# NRHA Nomination Program

	2011	2012	2013	2014	2015	2016
<b>Argentina</b>	1	2	11	6	8	7
<b>Austria</b>	27	36	34	33	50	44
<b>Belgium</b>	26	48	57	75	88	65
<b>Czech Republic</b>	1	4	4	5	8	9
<b>Denmark</b>	2	1	7	3	5	2
<b>France</b>	10	17	46	50	45	43
<b>Germany</b>	83	130	178	172	194	138
<b>Hungary</b>		2				
<b>Israel</b>		2	1	2	2	
<b>Italy</b>	97	185	297	348	391	299
<b>Luxembourg</b>		2	4	3	3	1
<b>Netherlands</b>	12	19	35	32	44	26
<b>Norway</b>			1			2
<b>Poland</b>	2	2	9	8	11	14
<b>Slovakia</b>	1	1	1	8	9	5
<b>Slovenia</b>			2	3		1
<b>Spain</b>	1			1	4	1
<b>Sweden</b>	6	10	9	15	17	12
<b>Switzerland</b>	7	11	22	8	9	6
<b>United Kingdom</b>		3	2	3	5	4
	<b>North American</b>	<b>Euro Option</b>	<b>Europe</b>	<b>NA Option</b>	<b>Total</b>	
<b>2011</b>	2411	421	540	32	2951	
<b>2012</b>	2494	416	650	51	3144	
<b>2013</b>	2498	468	727	40	3225	
<b>2014</b>	2362	400	830	33	3192	
<b>2015</b>	2656	503	987	50	3643	



# NRHA European Shows



<b>2011</b>	111
<b>2012</b>	117
<b>2013</b>	110
<b>2014</b>	122
<b>2015</b>	123
<b>2016</b>	125

<b>Austria</b>	47
<b>Belgium</b>	33
<b>Czech Republic</b>	23
<b>Denmark</b>	27
<b>Finland</b>	33
<b>France</b>	124
<b>Germany</b>	70
<b>Hungary</b>	3
<b>Israel</b>	60
<b>Italy</b>	46
<b>Luxembourg</b>	10
<b>Netherlands</b>	36
<b>Norway</b>	16
<b>Poland</b>	30
<b>Spain</b>	2
<b>Sweden</b>	40
<b>Switzerland</b>	15
<b>United Kingdom</b>	93

---2011-2016

# NRHA European Shows Added Money

<b>2011</b>	\$1,869,249.2 8
<b>2012</b>	\$2,029,286.9 4
<b>2013</b>	\$1,742,000.1 9
<b>2014</b>	\$1,868,543.7 2
<b>2015</b>	\$1,932,066.3 1
<b>2016</b>	\$1,697,726.4 9

<b>Austria</b>	\$1,008,022.03
<b>Belgium</b>	\$507,206.59
<b>Czech Republic</b>	\$267,198.00
<b>Denmark</b>	\$32,297.50
<b>Finland</b>	\$6,440.00
<b>France</b>	\$1,188,310.00
<b>Germany</b>	\$2,544,646.36
<b>Hungary</b>	\$1,450.00
<b>Israel</b>	\$212,250.00
<b>Italy</b>	\$3,858,108.62
<b>Luxembourg</b>	\$6,740.00
<b>Netherlands</b>	\$242,151.49
<b>Norway</b>	\$18,300.00
<b>Poland</b>	\$482,546.00
<b>Spain</b>	\$4,640.00
<b>Sweden</b>	\$177,950.00
<b>Switzerland</b>	\$389,898.10
<b>United Kingdom</b>	\$190,718.24

United 2016



# NRHA European Shows Entries

<b>2011</b>	3611
<b>2012</b>	3548
<b>2013</b>	3638
<b>2014</b>	3706
<b>2015</b>	3699
<b>2016</b>	3287

	<b>2011</b>	<b>2012</b>	<b>2013</b>	<b>2014</b>	<b>2015</b>	<b>2016</b>
<b>Austria</b>	367	394	390	308	456	313
<b>Belgium</b>	228	287	284	286	280	150
<b>Czech Republic</b>	84	97	97	101	88	
<b>Denmark</b>	77	68	57	78	74	100
<b>Finland</b>	18	19	11	15	17	16
<b>France</b>	465	562	649	733	722	545
<b>Germany</b>	724	553	684	637	754	560
<b>Hungary</b>	9	9	9			
<b>Israel</b>	70	53	73	94	117	107
<b>Italy</b>	688	683	50	698	342	551
<b>Luxembourg</b>		6	21	14	15	29
<b>Netherlands</b>	305	310	308	236	280	370
<b>Norway</b>	19	30	23	33	56	43
<b>Poland</b>	98	83	78	104	99	160
<b>Sweden</b>	172	158	128	184	167	145
<b>Switzerland</b>	187	131	91	108	117	107
<b>United Kingdom</b>	100	105	85	77	78	72

# NRHA European Derby Entries

	2016	2015	2014	2013	2012	2011
<b>Level 4 Open</b>	45	53	50	56	63	77
<b>Level 3 Open</b>	48	43	47	43	28	61
<b>Level 2 Open</b>	47	49	49	57	74	81
<b>Level 1 Open</b>	21	27	26	29	49	72
<b>Level 4 Non Pro</b>	52	45	39	39	50	61
<b>Level 3 Non Pro</b>	54	52	50	54	40	60
<b>Level 2 Non Pro</b>	73	67	67	80	84	99
<b>Level 1 Non Pro</b>	56	52	60	67	68	96
<b>Total Derby</b>	<b>185</b>	<b>183</b>	<b>181</b>	<b>198</b>	<b>227</b>	<b>235</b>
<b>Level 4 Open</b>	28	26	37	30	36	27
<b>Level 2 Open</b>	12	28	20	35	33	42
<b>Level 4 Non Pro</b>	12	7	8	19	4	9
<b>Level 2 Non Pro</b>	2	10	8	18	5	8
<b>Total Pre Futurity show</b>	<b>53</b>	<b>58</b>	<b>65</b>	<b>81</b>	<b>65</b>	<b>73</b>
<b>Open</b>	12	12	4	10	10	15
<b>Intermediate Open</b>	4	9	6	22	12	16
<b>Limited Open</b>	8	16	16	21	21	15
<b>Non Pro</b>	11	14	15	16	5	15
<b>Intermediate Non Pro</b>	12	15	7	8	10	24
<b>Limited Non Pro</b>	35	33	15	23	20	22
<b>Novice Horse Open Level 2</b>	55	69	53	61	53	35
<b>Novice Horse Non Pro</b>						
<b>Level 2</b>	58	43	36	30	16	29
<b>Rookie L1</b>	5	12	14	9	6	12
<b>Rookie L2</b>	6	11				
<b>Youth 13 &amp; Under</b>	0	1	2	2	1	1
<b>Youth 14 - 18</b>	9	4	4	1	2	3
<b>Total Ancillary</b>	<b>215</b>	<b>239</b>	<b>172</b>	<b>203</b>	<b>156</b>	<b>187</b>
<b>Total Event</b>	<b>453</b>	<b>480</b>	<b>418</b>	<b>482</b>	<b>448</b>	<b>495</b>





# NRHA European Futurity Entries

	2016	2015	2014	2013	2012	2011	2010	2009
Level 4 Open	59	64	58	55	78	88	80	68
Level 3 Open	51	45	41	35	36	72	72	59
Level 2 Open	43	39	39	45	59	75	72	73
Level 1 Open	18	16	25	21	28	63	63	58
Level 4 Non Pro	40	40	33	25	46	45	48	44
Level 3 Intermediate Non Pro	40	32	21	20	33	43	43	37
Level 2 Limited Non Pro	39	34	22	25	41	47	45	35
Level 1 Non Pro	25	18	11	16	22	44	45	32
<b>Total Futurity</b>	<b>158</b>	<b>143</b>	<b>129</b>	<b>126</b>	<b>176</b>	<b>175</b>	<b>166</b>	<b>145</b>
Open	14	17	39	14	22	14	29	34
Intermediate Open	17	18	21	23	22	26	24	31
Limited Open	10	15	24	15	36	27	26	34
Non Pro	27	33	30	20	31	29	31	36
Intermediate Non Pro	27	28	42	24	31	45	36	41
Limited Non Pro	33	46	42	32	43	52	53	45
Novice Horse Open Level 2		82	89	74	68	55	61	35
Novice Horse Non Pro Level 2		44	37	37	45	37	46	29
Rookie	15	21	16	15	36	30	31	14
Youth 13 & Under	0	1	3	0	9	4	3	0
Youth 14 - 18	8	6	3	9	7	13	8	3
Open 5 & up	21	25	31	13				
Non Pro 5 & up	34	35	35	20				
<b>Total Ancillary</b>	<b>206</b>	<b>371</b>	<b>412</b>	<b>296</b>	<b>350</b>	<b>332</b>	<b>348</b>	<b>302</b>
<b>Total Event</b>	<b>364</b>	<b>514</b>	<b>541</b>	<b>422</b>	<b>526</b>	<b>507</b>	<b>514</b>	<b>447</b>



# NRHA European Derby Purse

	2013	2014	2015	2016
<b>Nomination</b>	€ 60,819.00	€ 95,134.40	€ 115,124.88	€ 153,314.36
<b>Added Money</b>	€ 100,245.70	€ 113,837.36	€ 126,831.17	€ 151,654.33
	-€ 39,426.70	-€ 18,702.96	-€ 11,706.29	€ 1,660.02
<b>Level 1 Open</b>	€ 4,257.33	€ 6,659.41	€ 8,058.74	€ 10,732.00
<b>Level 2 Open</b>	€ 8,514.66	€ 13,318.82	€ 16,117.48	€ 21,464.01
<b>Level 3 Open</b>	€ 21,000.00	€ 23,307.93	€ 28,205.60	€ 37,562.02
<b>Level 4 Open</b>	€ 37,000.00	€ 37,000.00	€ 37,000.00	€ 37,000.00
<b>Level 1 Non Pro</b>	€ 1,824.57	€ 2,854.03	€ 3,453.75	€ 4,599.43
<b>Level 2 Non Pro</b>	€ 3,649.14	€ 5,708.06	€ 6,907.49	€ 9,198.86
<b>Level 3 Non Pro</b>	€ 9,000.00	€ 9,989.11	€ 12,088.11	€ 16,098.01
<b>Level 4 Non Pro</b>	€ 15,000.00	€ 15,000.00	€ 15,000.00	€ 15,000.00



# NRHA European Futurity Purse

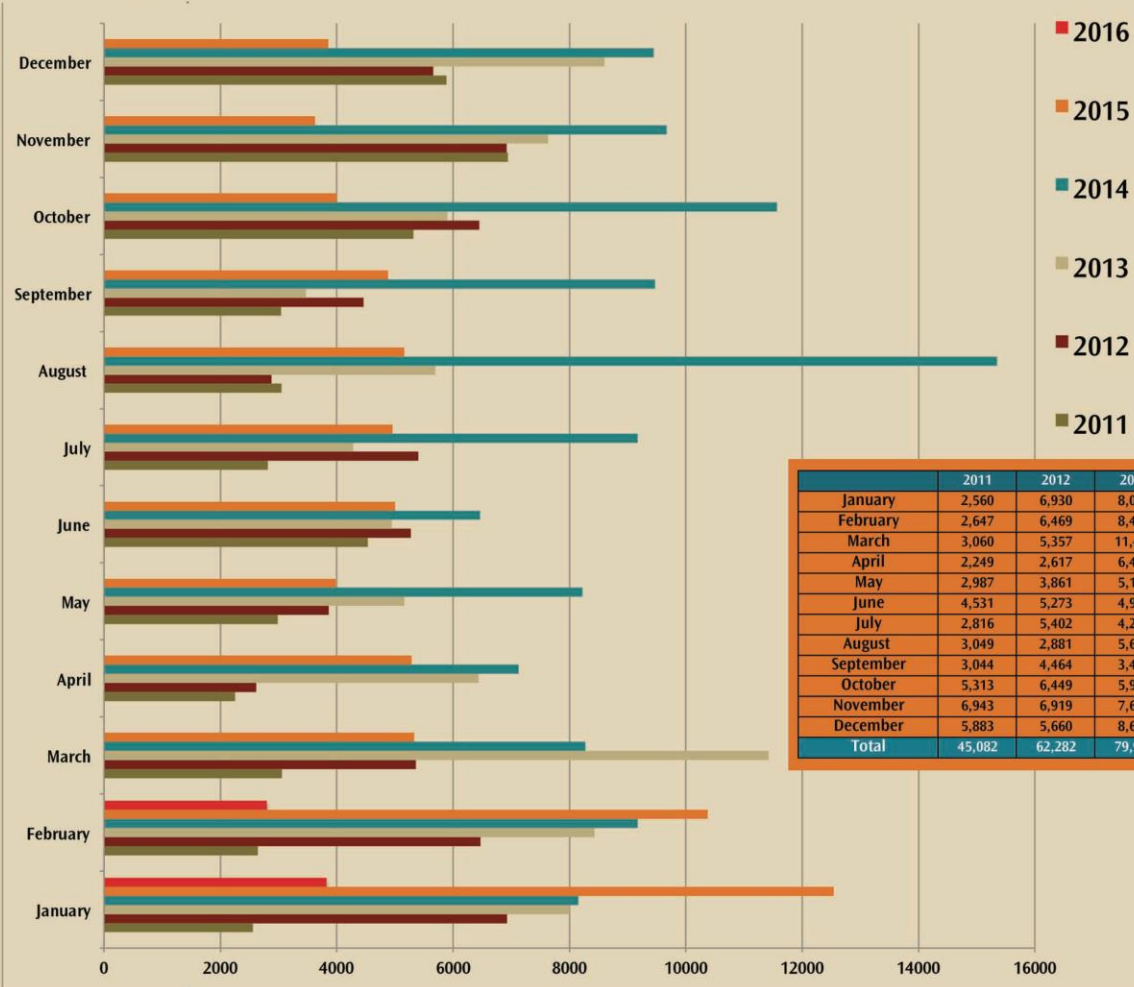
	2013	2014	2015	2016	2017
<b>Nomination</b>	€ 91,228.50	€ 135,576.60	€ 165,273.82	€ 196,800.46	€ 156,865.58
<b>Added Money</b>	€ 199,947.54	€ 217,908.52	€ 235,427.98	€ 255,920.30	€ 229,962.63
	-€ 108,719.04	-€ 82,331.92	-€ 70,154.16	-€ 59,119.84	-€ 73,097.05
<b>Level 1 Open</b>	€ 6,386.00	€ 9,490.36	€ 11,569.17	€ 13,776.03	€ 10,980.59
<b>Level 2 Open</b>	€ 12,771.99	€ 18,980.72	€ 23,138.33	€ 27,552.06	€ 21,961.18
<b>Level 3 Open</b>	€ 35,000.00	€ 35,000.00	€ 40,492.08	€ 48,216.11	€ 38,432.07
<b>Level 4 Open</b>	€ 92,000.00	€ 92,000.00	€ 92,000.00	€ 92,000.00	€ 92,000.00
<b>Level 1 Non Pro</b>	€ 2,736.86	€ 4,067.30	€ 4,958.21	€ 5,904.01	€ 4,705.97
<b>Level 2 Non Pro</b>	€ 5,473.71	€ 8,134.60	€ 9,916.43	€ 11,808.03	€ 9,411.93
<b>Level 3 Non Pro</b>	€ 9,578.99	€ 14,235.54	€ 17,353.75	€ 20,664.05	€ 16,470.89
<b>Level 4 Non Pro</b>	€ 36,000.00	€ 36,000.00	€ 36,000.00	€ 36,000.00	€ 36,000.00



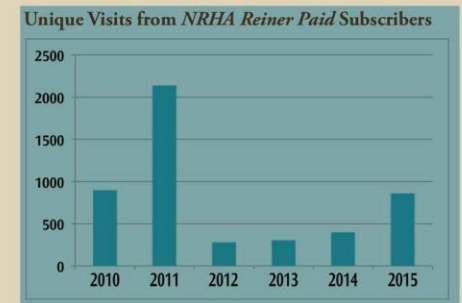
# NRHA Five Year Statics OVERVIEW

3021 West Reno Avenue | Oklahoma City, Oklahoma 73107 | (405) 946-7400 | [nrha.com](http://nrha.com) | f:(405) 946-8425

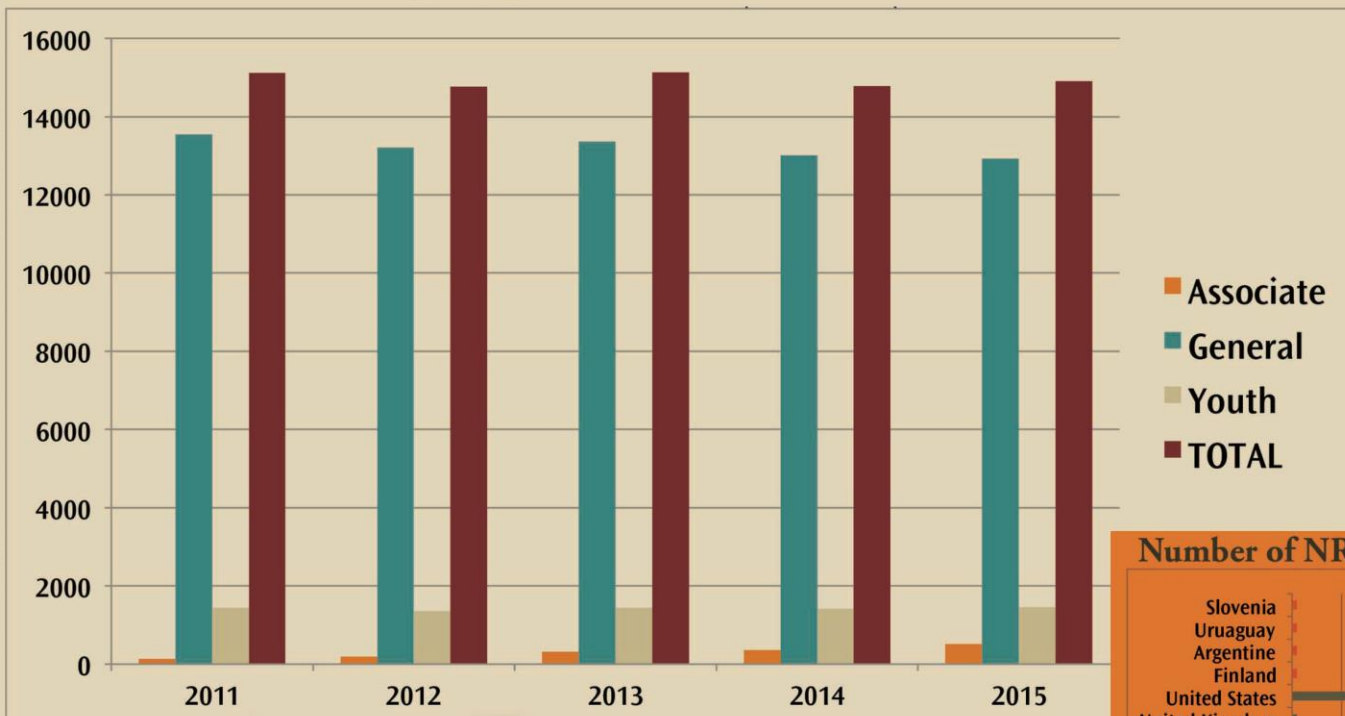
# NRHA Reiner Digital Edition Unique Visits



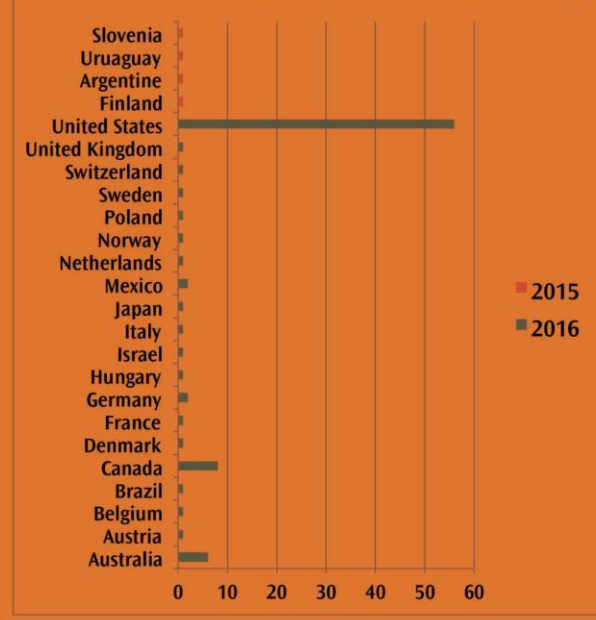
	2011	2012	2013	2014	2015	2016
January	2,560	6,930	8,000	8,156	12,546	3,824
February	2,647	6,469	8,427	9,169	10,373	2,803
March	3,060	5,357	11,421	8,271	5,330	
April	2,249	2,617	6,434	7,124	5,285	
May	2,987	3,861	5,156	8,226	3,984	
June	4,531	5,273	4,944	6,467	5,005	
July	2,816	5,402	4,283	9,174	4,963	
August	3,049	2,881	5,692	15,349	5,162	
September	3,044	4,464	3,471	9,468	4,883	
October	5,313	6,449	5,904	11,568	3,996	
November	6,943	6,919	7,634	9,672	3,627	
December	5,883	5,660	8,601	9,449	3,857	
<b>Total</b>	<b>45,082</b>	<b>62,282</b>	<b>79,967</b>	<b>112,093</b>	<b>69,011</b>	<b>6,627</b>



# NRHA Membership Types and Totals

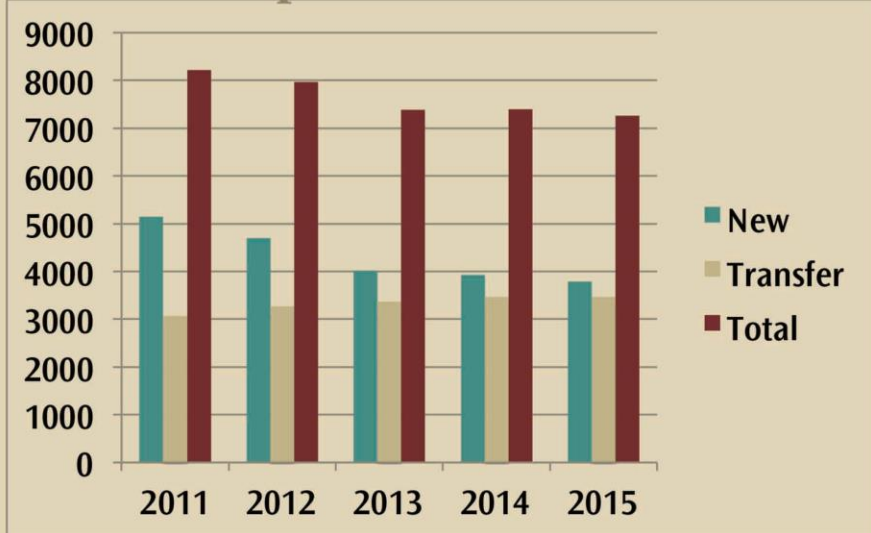


## Number of NRHA Affiliate by Country



	2015	2016
Australia		6
Austria		1
Belgium		1
Brazil		1
Canada		8
Denmark		1
France		1
Germany		2
Hungary		1
Israel		1
Italy		1
Japan		1
Mexico		2
Netherlands		1
Norway		1
Poland		1
Sweden		1
Switzerland		1
United Kingdom		1
United States		56
Finland	1	0
Argentina	1	0
Uruguay	1	0
Slovenia	1	0

# NRHA Competition Licenses



	New	Transfer	Total
<b>2011</b>	5,141	3,070	8,211
<b>2012</b>	4,698	3,270	7,968
<b>2013</b>	4,013	3,365	7,378
<b>2014</b>	3,924	3,464	7,388
<b>2015</b>	3,793	3,460	7,253

# NRHA Nomination

	North American	EU Option	Total	European	NA Option	Total	Overall Total
<b>2011</b>	2,411	418	2,829	540	32	572	3,401
<b>2012</b>	2,528	412	2,940	650	51	701	3,641
<b>2013</b>	2,485	468	2,953	726	40	766	3,719
<b>2014</b>	2,361	398	2,759	826	33	859	3,618
<b>2015</b>	2,566	471	3,037	896	40	936	3,973

